

A study by the Department of Animal and Poultry Science

Independent Study - Dr. H. L. Classen

B.S.A. (Saskatchewan), M.S. (Massachusetts), Ph.D. (Massachusetts)

Department of Animal and Poultry Science

Expertise in Poultry Management and Nutrition



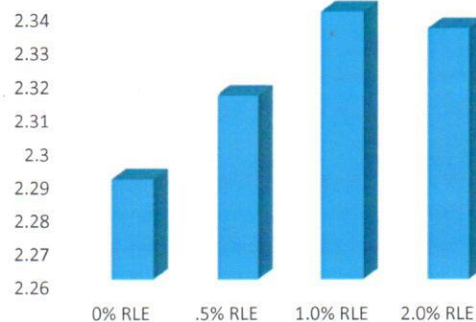
Broiler Study based on:

Male broilers were fed a standard commercial ration with three treatment levels: .05%, 1%, and 2%. Results were compared against broilers that did not have **Red Lake Earth®** added to their diet.

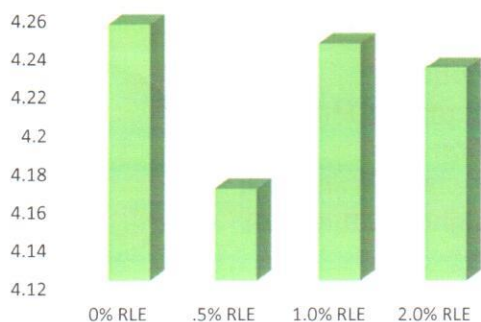
Broiler Study results:

- Mortality was decreased with increasing levels of RLE
- Growth rate was maximum at the 1% level
- Feed efficiency was best at the 0.5 % level

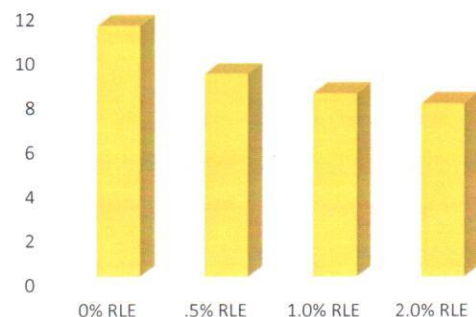
Body Weight (kg)



Feed Efficiency (kg)



Mortality (%)



"Dietary Red Lake Earth® was shown to improve the growth and feed efficiency of broiler chickens while numerically reducing mortality."

-Dr. Classen

DIATOMACEOUS RED LAKE
earth®
with Calcium Montmorillonite

A study by the **University of British Columbia, Avian Research Centre**

*Published Study - D. C. Bennett, A. Yee, Y.-J. Rhee, and K. M. Cheng (2011).
Effect of diatomaceous earth on parasite load, egg production, and egg
quality of free-range organic laying hens.
Poultry Science, 90:1416-1426.*



Egg-Layer Study based on:
Commercial Brown Egg-Layer hens, Bovan Brown (BB) and Lowmann
Brown (LB), were supplemented 2 % of their diets with **Red Lake Earth**®.

TOLL FREE 800.667.0336

Egg-Layer Study results:

- Decreased internal parasite load in birds with lower resistance
- Increased body weight
- Increased feed consumption
- Significantly less Northern Fowl Mites
- Increased egg production
- Larger eggs with more albumen and yolk
- Increased egg shell weight and thickness

"Based on the current price of organic table eggs, the cost of certified organic poultry feed, and the cost of the **Red Lake Earth**® supplement, balancing the increased feed costs with the increase in egg sales, we estimate that supplementing **Red Lake Earth**® in the diet increased the profitability of BB hens by \$0.06/hen per day and LB hens by \$0.03/hen per day."

For a 10,000 hen operation this would amount to \$600 per day for BB hens and \$300 per day for LB hens.

DISTRIBUTED BY
BIRD RIVER



NELSON SHODINE *president*

Ph/Fx: (204)589-2848 | Cell: (204)797-6740

Email: shodine@mts.net

1059 Selkirk Ave. | Winnipeg, MB | R2X 0C2